

COLAR AND CUFF

Project By

Sara O'Sullivan

Fashion 2211

THEME

FOR MY PORTFOLIO I HAVE CHOSEN IDENTITY AS
MY THEME

Designers I researched for this project were

Chloe, Zimmerman, Dior and Purple Fish Bowl as they are all designers you made high statement collars and cuffs which allow the wearer to express their individuality.

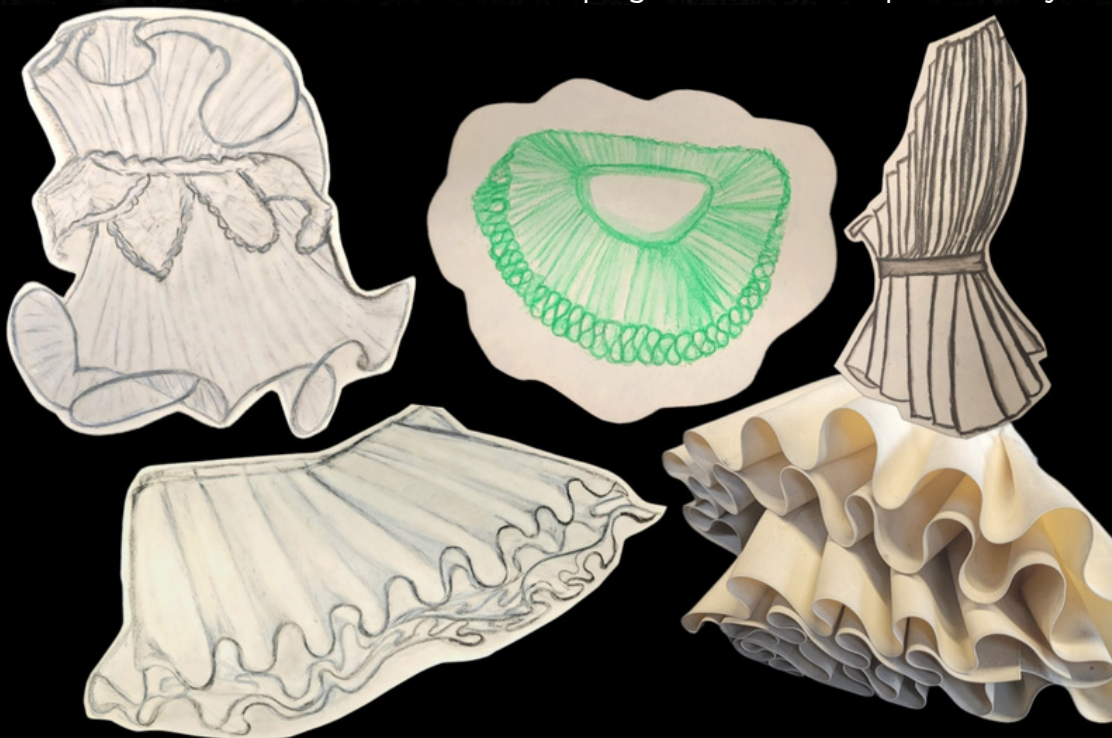


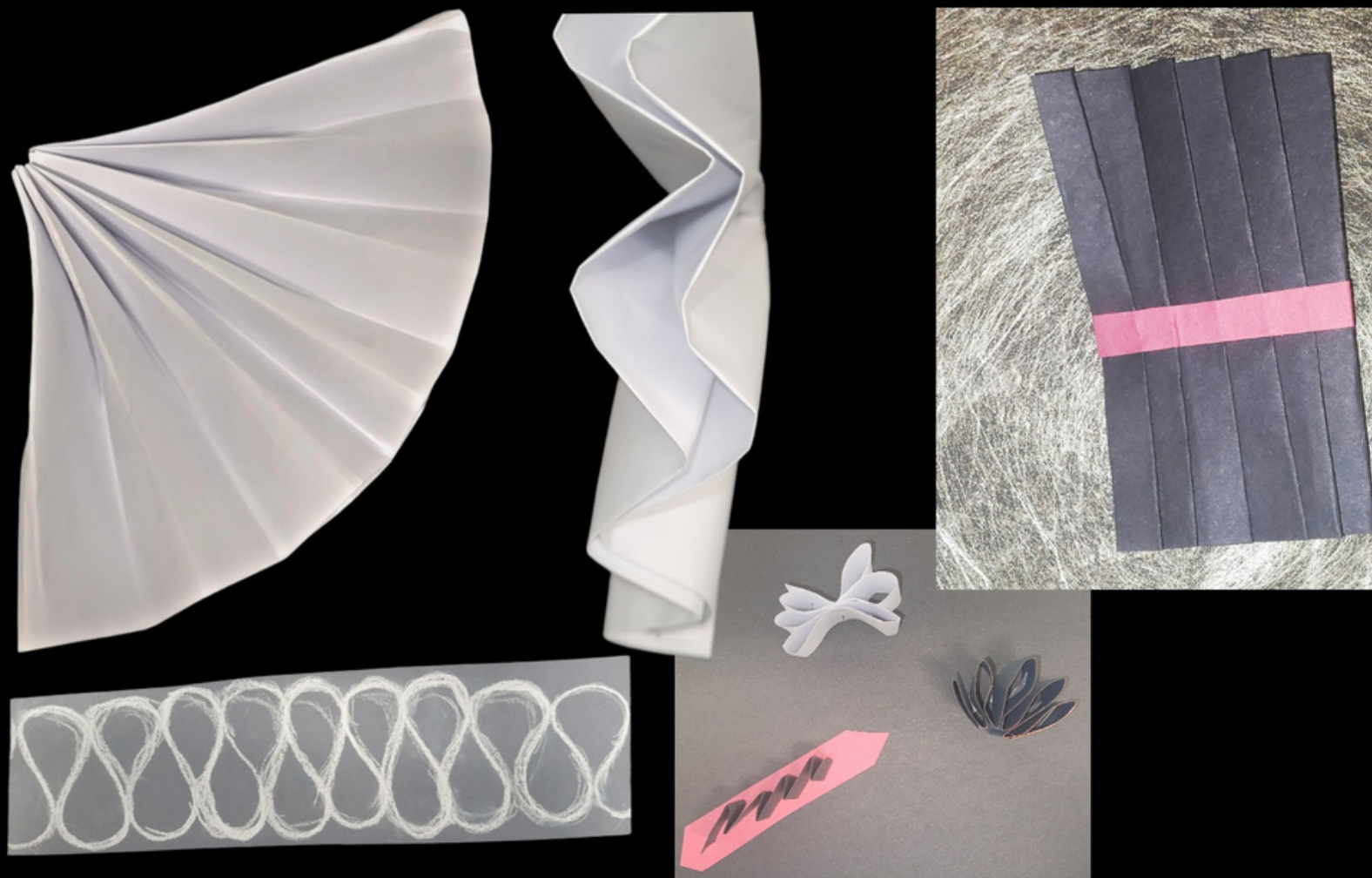
INSPIRATION

**My Inspiration for this design
was the sexual expression
found in the fetish
community, blended with
the grandeur of historic
regality.**

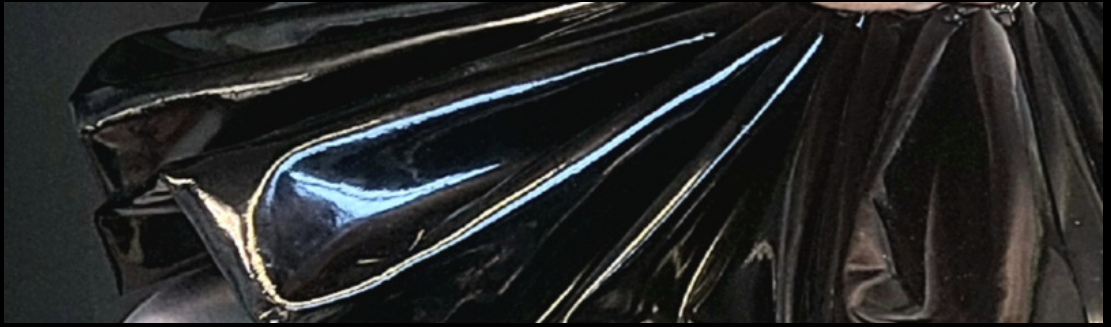
I wanted to bring the softness of regality with the harshness of fetish, so this was explored through my development drawings.

Working with soft finishes & dramatic designs I worked with different ways of combining, starting with quite soft yet dramatic designs and working my way across this spectrum, changing the balance as I progressed the development of my design.





While making mock designs of both my collar and cuff, I decided I needed a structured material for my collar & a more flowing fabric for my cuff, but both keeping the "edgy" factor i wanted for my final look.



With this in mind I chose a black PVC fabric for my collar. Allowing it to have the high structure of a ruff while also bringing the sleek and sexy quality I wish to express through the piece.



For the cuff I chose a heavy black lace. This was able to take the high pleat for the design but still giving the delicacy of regency. While a trim of the PVC with this heavy black fabric adds the edge.



For The Final look I wanted to return to the fetish feel, so i needed a dark and sleek aesthetic.

To achieve this look i paired the 2 pieces with a black high shine background & a pale model. To continue the contrast the model is wearing only black lipstick and modified earrings ("tunnels"). This gives a dramatic and sultry finish.





**Thank you for
watching.**

